

# World Book® Online:

The most trusted, kid-friendly reference tool online.

Name: \_\_\_\_\_ Date: \_\_\_\_\_

## Get to Know: China

China has more people than any other country. In fact, about 20 percent of the world's population lives in this large Asian country. China is also one of the world's oldest countries, with a rich history that stretches over thousands of years. How much do you know about this country and its culture and history? Set off on a webquest to explore China and find out!



First, log onto **www.worldbookonline.com**

Then, click on "Student." If prompted, log on with your ID and password.

## Find It!

*Find the answers to the questions below by using the "Search" tool to search key words.*

*Since this activity is about China, you can start by searching the key word "China."*

*Write the answers on the lines provided or below the question.*

1. The capital of China is \_\_\_\_\_, which is also spelled \_\_\_\_\_.
2. Over 90 percent of China's people live in the \_\_\_\_\_ half of China.
3. The Chinese call their country \_\_\_\_\_, which means \_\_\_\_\_.
4. China's government is dominated by the Chinese \_\_\_\_\_ Party.
5. China is one of the world's oldest living civilizations. Its written history goes back about \_\_\_\_\_ years.
6. China's land ranges subarctic regions in the \_\_\_\_\_ to tropical lowlands in the \_\_\_\_\_ and from fertile plains in the \_\_\_\_\_ to deserts in the \_\_\_\_\_.

7. Chinese *calligraphy* (fine handwriting) has long been closely linked with the arts of

\_\_\_\_\_ and \_\_\_\_\_.

8. Two of the world's longest rivers, the \_\_\_\_\_ and the \_\_\_\_\_, flow eastward across China.

9. Major religions throughout most of China's history include \_\_\_\_\_, \_\_\_\_\_, and \_\_\_\_\_.

.....

## True or False

Write "True" if the statement about China is correct. If the statement is not correct, write "False" and correct the statement in the space below.

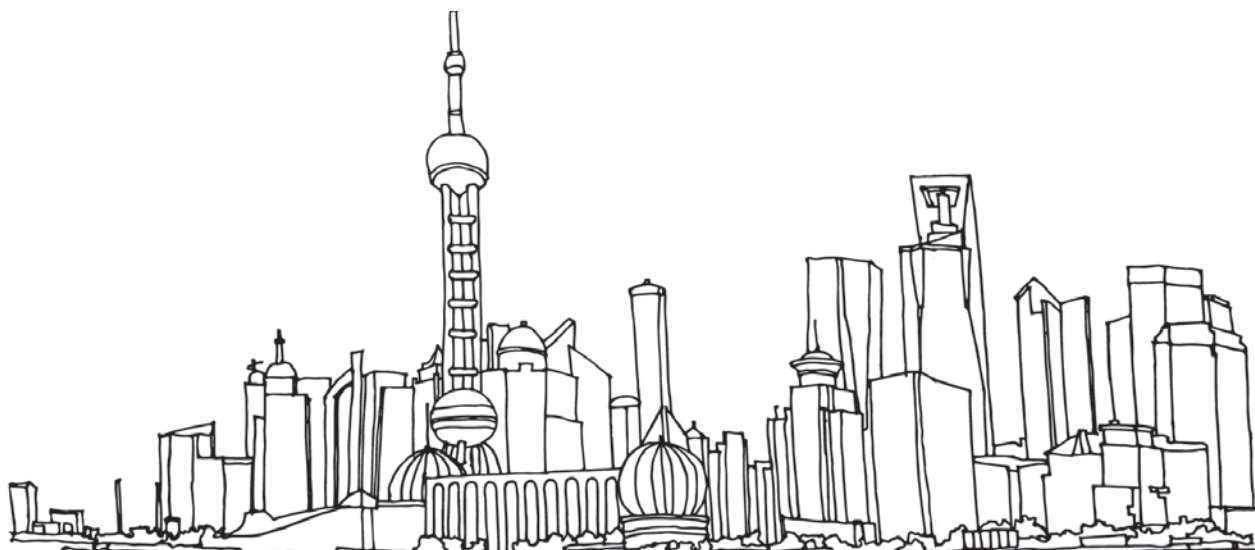
\_\_\_\_\_ 10. Shanghai is China's largest city.

\_\_\_\_\_ 11. Twenty Chinese cities each have more than a million people.

\_\_\_\_\_ 12. In the 200's B.C., the Han dynasty formed the first united Chinese empire.

\_\_\_\_\_ 13. Most of China's people belong to the Han nationality.

\_\_\_\_\_ 14. The di, pipa, qin, sheng, and xiao are types of traditional Chinese musical instruments.



.....

## Find It!

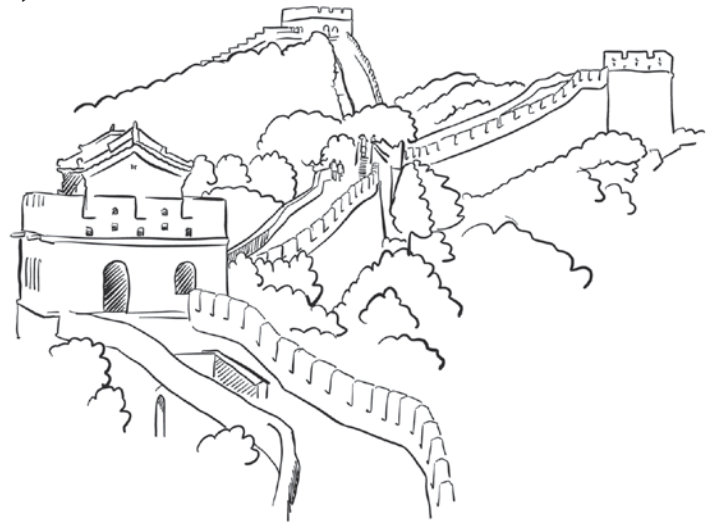
15. What do people in China eat for breakfast?
16. In what ways does China's national government exercise control of the country's economy?
17. What are some livestock that are raised by Chinese farmers?
18. Look at the map “China–Ethnic Groups.” In which part of China do the Kazakhs and Uyghurs live?
19. What was the purpose of the Great Leap Forward? What did the Great Leap Forward do to China’s economy?

.....

## Chinese Dynasties

*In the line provided, write when each of these dynasties ruled China. (Hint: For this question see the “Important dates in China” table in the “China” article.)*

- |       |                  |
|-------|------------------|
| _____ | 20. Qin dynasty  |
| _____ | 21. Han dynasty  |
| _____ | 22. Song dynasty |
| _____ | 23. Ming dynasty |
| _____ | 24. Qing dynasty |



25. What is the length of the main portion of the Great Wall of China that exists today? (Hint: For this question see the “Great Wall of China” article.)
26. What do the five stars on China’s flag represent? (Hint: For this question see the “China flag” article.)

27. In ancient China, what did the Chinese New Year festival mark? (Hint: For this question see the “Chinese New Year” article.)
28. What is the terra-cotta army of Xi’an? (Hint: For this question see the “Terra-cotta army of Xi’an” article.)
29. What is the Forbidden City and how did it get its name? (Hint: For this question see the “Forbidden City” article.)
30. Who was Shi Huangdi? (Hint: For this question see the “Shi Huangdi” article.)
31. How long is the Grand Canal and when did construction of the canal begin? (Hint: For this question see the “Grand Canal” article.)
32. The giant panda lives in central China. How much bamboo can a giant panda eat in one day? (Hint: For this question see the “Panda” article.)

.....

## Map It!

*Within the “China” article, you will find the map “Economy in China.” Study the map and answer the following questions.*

33. Name five mining products for which China is one of the world's leading producers.
34. Name five crops that are farmed in China.
35. China produces more tea than any other country. According to the map, in which part of China is tea grown?

## Timeline

Put the events of China's history in order of when they happened. (Hint: For this question see the "History" section of the "China" article.)

- \_\_\_\_\_ A. Mongol leader Kublai Khan established the Yuan dynasty.
- \_\_\_\_\_ B. Millions of Chinese died in the Taiping Rebellion.
- \_\_\_\_\_ C. The Zhou people established a dynasty that ruled for nearly 800 years.
- \_\_\_\_\_ D. Communists in China launched the Great Leap Forward.
- \_\_\_\_\_ E. The great philosopher Confucius proposed new moral standards.
- \_\_\_\_\_ F. China regained control of Hong Kong from the United Kingdom.
- \_\_\_\_\_ G. Mao Zedong proclaimed the establishment of the People's Republic of China.
- \_\_\_\_\_ H. The emperor Shi Huangdi began construction of the Great Wall of China.
- \_\_\_\_\_ I. Hundreds of Westerners and Chinese Christians were killed in the Boxer Rebellion.
- \_\_\_\_\_ J. The Manchus established the Qing dynasty.

### Read more about China by visiting World Book's eBook collection:

*Ayo's Awesome Adventures in Beijing: Capital of China.* Chicago: World Book, 2018. Ayo's Awesome Adventures. *World eBook Web*. 29 Nov. 2018.

<<http://www.worldbookonline.com/wb/ebooks/mall/instit/catalog/urn:ISBN:978-0-7166-3648-9/detail.do>>.

*Chinese Revolution.* Chicago: World Book, 2014. Documenting History. *World eBook Web*. 29 Nov. 2018.

<<http://www.worldbookonline.com/wb/ebooks/mall/instit/catalog/urn:ISBN:978-0-7166-2569-8/detail.do>>.

*Myths and Legends of China.* Chicago: World Book, 2014. Famous Myths and Legends of the World. *World eBook Web*. 3 Dec. 2018.

<<http://www.worldbookonline.com/wb/ebooks/mall/instit/catalog/urn:ISBN:978-0-7166-2644-2/detail.do>>.



# Teacher Page

## Answers

1. The capital of China is Beijing, which is also spelled Peking.
2. Over 90 percent of China's people live in the eastern half of China.
3. The Chinese call their country *Zhongguo*, which means *Middle Country*.
4. China's government is dominated by the Chinese Communist Party.
5. China is one of the world's oldest living civilizations. Its written history goes back about 3,500 years.
6. China's land ranges from subarctic regions in the north to tropical lowlands in the south and from fertile plains in the east to deserts in the west.
7. Chinese *calligraphy* (fine handwriting) has long been closely linked with the arts of poetry and painting.
8. Two of the world's longest rivers, the Huang He and the Yangtze, flow eastward across China.
9. Major religions throughout most of China's history include Confucianism, Taoism, and Buddhism.
10. True.
11. False. More than 100 Chinese cities each have more than a million people.
12. False. In the 200's B.C., the Qin dynasty formed the first united Chinese empire.
13. True.
14. True.
15. Breakfast foods in China include rice porridge, steamed buns, or deep-fried pastries that taste like doughnuts.
16. The Chinese government controls the most important industrial plants and operates most of the nation's banks, most long-distance transportation, and foreign trade. It also sets the prices of certain key goods and services. The government makes national economic plans that cover five-year periods. These plans determine how the government will work to improve different areas of the economy.
17. Chinese farmers raise beef and dairy cattle, chickens, ducks, goats, hogs, horses, and sheep.
18. The Kazakhs and Uyghurs live in the western part of China.
19. The Great Leap Forward was a plan designed to accelerate China's economic development. It damaged the economy and caused the worst famine in China's history.
20. 221-206 B.C.
21. 206 B.C. – A.D. 220
22. 960-1279
23. 1368-1644
24. 1644-1912

25. The main portion of the Great Wall that exists today stretches about 5,500 miles (8,850 kilometers).
26. The large star on China's flag represents the leadership of the Chinese Communist Party. The small stars stand for people united under the party's leadership.
27. In ancient China, the Chinese New Year festival marked the end of one farming season and the beginning of a new one.
28. The terra-cotta army of Xi'an is a collection of ancient, life-size statues of soldiers found in burial pits near Xi'an, China.
29. The Forbidden City is a historic walled area that was the home of 24 of China's emperors during the Ming and Qing dynasties. The Forbidden City is so called because most common people were not allowed to enter.
30. Shi Huangdi was a Chinese emperor who founded the Qin dynasty.
31. The Grand Canal is about 1,000 miles (1,600 kilometers) long. Construction of the canal began around 500 B.C.
32. A giant panda can eat as much as 85 pounds (39 kilograms) of bamboo shoots in one day.
33. Answers will vary. Students should have any 5 of the products: aluminum, coal, copper, gold, iron ore, lead, magnesium, manganese, salt, tin, tungsten, and zinc.
34. Answers will vary. Students should have any 5 of the following crops: corn, cotton, fruit (various), rice, rubber, soybeans, sugar beets, sugar cane, sweet potatoes, tea, tobacco, vegetables (various) and wheat.
35. Tea is grown in the southeastern part of China.

## Timeline

*The correct order of the events is:*

- C. The Zhou people established a dynasty that ruled for nearly 800 years.
- E. The great philosopher Confucius proposed new moral standards.
- H. The emperor Shi Huangdi began construction of the Great Wall of China.
- A. Mongol leader Kublai Khan established the Yuan dynasty.
- J. The Manchus established the Qing dynasty.
- B. Millions of Chinese died in the Taiping Rebellion.
- I. Hundreds of Westerners and Chinese Christians were killed in the Boxer Rebellion.
- G. Mao Zedong proclaimed the establishment of the People's Republic of China.
- D. Communists in China launched the Great Leap Forward.
- F. China regained control of Hong Kong from the United Kingdom.